
7. Level 2 Repair

7-1. Components on the Rear Case



7. Level 2 Repair

7-2. Pre-requisite

	
Tweezers / Disass'y Stick / Screw Driver	Anti-static Gloves
	
Anti-static Mat	Hot Plate
	
A OCTA Disassembly Holder	OCTA Disassembly Upper
	
Ethyl Alcohol	Cotton Swab

7. Level 2 Repair

7-3. Disassembly

1

Put the device in the chamber as following below heating condition

- SOC 68%↓: 70℃±5/15±5 minute
- SOC 68%↑: Disassemble before and after discharge

※ Please confirm the heating condition released lastly, and follow it.



2

- 1) Remove SIM Tray on side.
- 2) Disassemble Rear Cover.



※ Caution
Be care of scratch.

※ Caution
Be care of scratch.

3

Remove screws 13ea.



4

- 1) Disassemble Rear TOP_ANT.
- 2) Disassemble Rear BTM_ANT.



※ Caution
Be care of scratch.

※ Caution
Be care of Rear amage.

7. Level 2 Repair

4

- 1) Remove PBA screws 2 points.
- 2) Disassemble LCD Connector

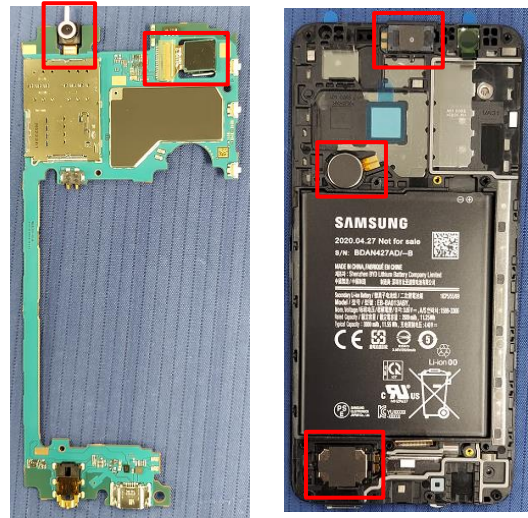


※ Caution

- 1) Be care of scratch.
- 2) Be care of Rear and connector damage.
- 3) Be careful not to damage the PBA.

5

- Detach other components.



※ Caution

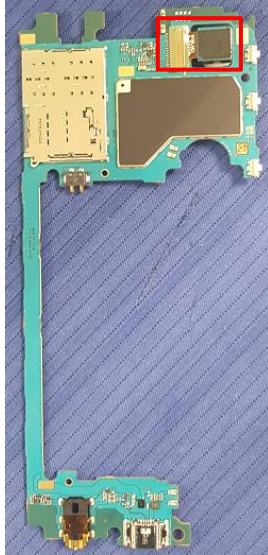
- 1) Be care of scratch.
- 2) Be careful not to damage the PBA.

7. Level 2 Repair

7-4. Assembly

1

- 1) Assemble Main Camera.
- 2) Attache tape on connectotr of Main camera.



2

Assemble RCV, MOT, SPK.



※ Caution

Be care of PBA damages.

※ Caution

Be care of Battery and LCD damages.

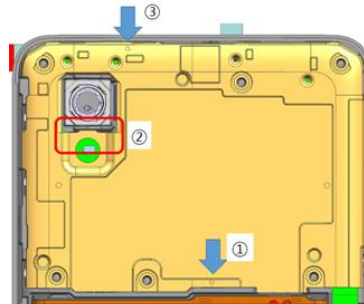
3

- 1) Assemble PBA on Front ass'y
 - 2) Assemble LCD connector.
 - 3) Assemble PBA screws 2 points
- * Torque Value : 1.2 ± 0.1 kgfcm



4

- 1) Assemble Rear TOP_ANT.
- 2) Assemble Rear BTM_ANT.





※ Caution

- 1) Be care of FPCB damage and tilt.
- 2) Be care of PBA damages.

※ Caution

Be care of press REAR damage.

7. Level 2 Repair

<div>5</div> <div>Assemble Rear screws 13 points. * Torque Value : 1.2 ± 0.1kgfcm</div> <div></div> <div><div>※ Caution</div><div>Be care of scratch and REAR damage.</div></div>	<div>6</div> <div>Assemble Rear ass'y.</div> <div></div> <div><div>※ Caution</div><div>Be care of scratch and REAR damage.</div></div>
---	--